

...and we have a
Rogm.TM

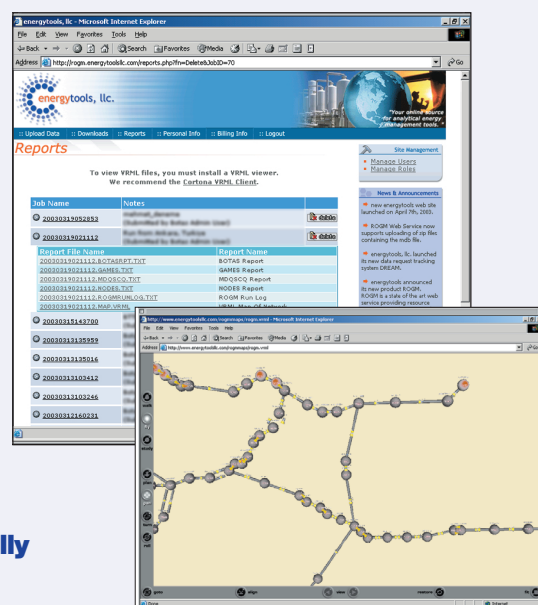
The ultimate gas supply optimization model

The Rogm™ service is a web based, affordable, highly flexible Gas Supply Optimization Model. It provides invaluable analysis for your organization's short-term, seasonal and long-term gas supply and resource usage plans as well as strategic portfolio decisions by incorporating all system and contractual constraints.

The Rogm™ service can model non-linear constraints such as storage ratchets in a realistic way and evaluate multiple demand scenarios individually or collectively.

The Rogm™ service is a mature product; it has been successfully used internationally for:

- **Budgeting**
- **Gas Supply Planning**
- **Strategic Resource Planning**
- **Tariff Design**
- **Short-term Dispatch Decisions**
- **Marginal Cost Analysis and Cost of Service Studies**
- **Shadow-price Valuation of Resources**
- **Stranded Cost Determination**
- **Unbundling Studies to Value Stranded Costs**
- **Balancing Studies to Evaluate Resources Needed for Partially or Fully Unbundled Utilities**
- **"No-Notice" Requirements** (Ability to Dispatch Negative Loads)
- **Reserve Margin Analysis** (Simultaneous Optimization of Multiple Demand Scenarios)
- **Virtual Storage** (Variable vs. Fixed Demand Costs)
- **Impact Analysis Involving:**
 - Known demand forecasts
 - Probabilistic demand forecasts
 - Resource acquisition scenarios
 - Pipeline and storage contract negotiation scenarios



Generate a VRML Map of your pipeline network

If you would like to test the Rogm™ service and learn more about its benefits to your organization, contact us at

1-800-719-5735



The Rogm™ service: Resource Optimizing Gas Model Service

www.energytoolsllc.com